

ViewSonic®



NMP-570/ NMP-570w **Network Media Player** **User Guide**

IMPORTANT: Please read this User Guide to obtain important information on installing and using your product in a safe manner, as well as registering your product for future service. Warranty information contained in this User Guide will describe your limited coverage from ViewSonic Corporation, which is also found on our web site at <http://www.viewsonic.com> in English, or in specific languages using the Regional selection box in the upper right corner of our website. "Antes de operar su equipo lea cuidadosamente las instrucciones en este manual"

Model No. VS13807/ VS14604

Compliance Information

FCC Statement

This device complies with part 15 of FCC Rules. Operation is subject to the following two conditions: (1) this device may not cause harmful interference, and (2) this device must accept any interference received, including interference that may cause undesired operation.

This equipment has been tested and found to comply with the limits for a Class B digital device, pursuant to part 15 of the FCC Rules. These limits are designed to provide reasonable protection against harmful interference in a residential installation. This equipment generates, uses, and can radiate radio frequency energy, and if not installed and used in accordance with the instructions, may cause harmful interference to radio communications. However, there is no guarantee that interference will not occur in a particular installation. If this equipment does cause harmful interference to radio or television reception, which can be determined by turning the equipment off and on, the user is encouraged to try to correct the interference by one or more of the following measures:

- Reorient or relocate the receiving antenna.
- Increase the separation between the equipment and receiver.
- Connect the equipment into an outlet on a circuit different from that to which the receiver is connected.
- Consult the dealer or an experienced radio/TV technician for help.

Warning: You are cautioned that changes or modifications not expressly approved by the party responsible for compliance could void your authority to operate the equipment.

For Canada

- This Class B digital apparatus complies with Canadian ICES-003.
- Cet appareil numérique de la classe B est conforme à la norme NMB-003 du Canada.

CE Conformity for European Countries

 The device complies with the EMC Directive 2004/108/EC and Low Voltage Directive 2006/95/EC.

Following information is only for EU-member states:

The mark is in compliance with the Waste Electrical and Electronic Equipment Directive 2002/96/EC (WEEE).

The mark indicates the requirement NOT to dispose the equipment including any spent or discarded batteries or accumulators as unsorted municipal waste, but use the return and collection systems available.



If the batteries, accumulators and button cells included with this equipment, display the chemical symbol Hg, Cd, or Pb, then it means that the battery has a heavy metal content of more than 0.0005% Mercury or more than, 0.002% Cadmium, or more than 0.004% Lead.



Declaration of RoHS Compliance

This product has been designed and manufactured in compliance with Directive 2002/95/EC of the European Parliament and the Council on restriction of the use of certain hazardous substances in electrical and electronic equipment (RoHS Directive) and is deemed to comply with the maximum concentration values issued by the European Technical Adaptation Committee (TAC) as shown below:

Substance	Proposed Maximum Concentration	Actual Concentration
Lead (Pb)	0.1%	< 0.1%
Mercury (Hg)	0.1%	< 0.1%
Cadmium (Cd)	0.01%	< 0.01%
Hexavalent Chromium (Cr ⁶⁺)	0.1%	< 0.1%
Polybrominated biphenyls (PBB)	0.1%	< 0.1%
Polybrominated diphenyl ethers (PBDE)	0.1%	< 0.1%

Certain components of products as stated above are exempted under the Annex of the RoHS Directives as noted below:

Examples of exempted components are:

1. Mercury in compact fluorescent lamps not exceeding 5 mg per lamp and in other lamps not specifically mentioned in the Annex of RoHS Directive.
2. Lead in glass of cathode ray tubes, electronic components, fluorescent tubes, and electronic ceramic parts (e.g. piezoelectronic devices).
3. Lead in high temperature type solders (i.e. lead-based alloys containing 85% by weight or more lead).
4. Lead as an alloying element in steel containing up to 0.35% lead by weight, aluminium containing up to 0.4% lead by weight and as a copper alloy containing up to 4% lead by weight.

Copyright Information

Copyright© ViewSonic Corporation, 2012. All rights reserved.

ViewSonic, the three birds logo, OnView, ViewMatch, and ViewMeter are registered trademarks of ViewSonic Corporation.

Disclaimer: ViewSonic Corporation shall not be liable for technical or editorial errors or omissions contained herein; nor for incidental or consequential damages resulting from furnishing this material, or the performance or use of this product.

In the interest of continuing product improvement, ViewSonic Corporation reserves the right to change product specifications without notice. Information in this document may change without notice.

No part of this document may be copied, reproduced, or transmitted by any means, for any purpose without prior written permission from ViewSonic Corporation.

For Your Records

Product Name:	NMP-570/ NMP-570w ViewSonic Network Media Player
Model Number:	VS13807/ VS14604
Document Number:	NMP-570/ NMP-570w_UG_ENG Rev. 1B 05-16-12
Serial Number:	_____
Purchase Date:	_____

Product disposal at end of product life

ViewSonic respects the environment and is committed to working and living green. Thank you for being part of Smarter, Greener Computing. Please visit ViewSonic website to learn more.

USA & Canada: <http://www.viewsonic.com/company/green/recycle-program/>

Europe: <http://www.viewsoniceurope.com/uk/kbase/article.php?id=639>

Taiwan: <http://recycle.epa.gov.tw/recycle/index2.aspx>

Content

1. Introduction	1
1.1. Features.....	1
1.2. Package contents	1
1.3. Mounting options	2
1.4. Physical view	2
2. Configuring the NMP-570/NMP-570w Media Player	3
2.1. System connections	3
2.2. USB keyboard configuration menus.....	4
2.3. Connect the NMP-570/NMP-570w to your network ..	4
2.4. Video output settings	5
2.5. Clock and calendar settings	5
2.6. Setting a password.....	6
2.7. Factory reset	6
2.8. Applying firmware upgrades	6
3. Content Management	7
4. Authoring in HTML5	7
5. Working with SMIL.....	7
5.1. Introduction.....	7
5.2. www.a-smil.org for developers	8
6. Technical Data	9
6.1. Specifications.....	9
7. Appendix: FAQ.....	11

1. Introduction

This document describes the hardware and software operations of the NMP-570/NMP-570w, system set up, and frequently asked questions.

1.1. Features

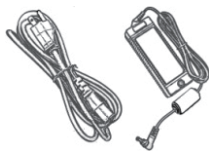
The NMP-570/NMP-570w is a Full-HD 1080p high definition digital signage player featuring industrial grade mechanical design and versatile open-standard HTML5 and SMIL programmability.

- Support for HTML5 widgets for dynamic content (W3C Widgets standard)
- Full-HD 1080p hardware decoding of MPEG, H.264, and VC-1 media formats
- 4GB on-board flash local storage with CF card slot
- Integrated audio and video output via HDMI
- Supports full POPAI Screen Media Formats Standards profiles S1 to S12, and E1 to E9
- Multiple 3rd party software solution compatibility
- Industry leading W3C SMIL support for developers
- (NMP-570W only) Built-in wireless b/g/n network

1.2. Package contents



Media Player Unit



AC Adapter and Cord



Ethernet cable



Standard 3.5mm to
RCA AV adapter



Quick Start Guide



Documentation CD



Software set up guide



Wi-Fi Antenna
(NMP-570W only)



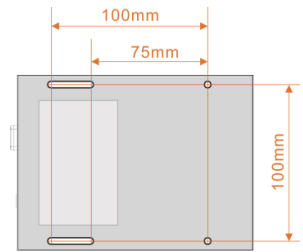
CF card cover/remover
(pre-installed on unit)

NOT INCLUDED: A USB keyboard is required for system setup

1.3. Mounting options

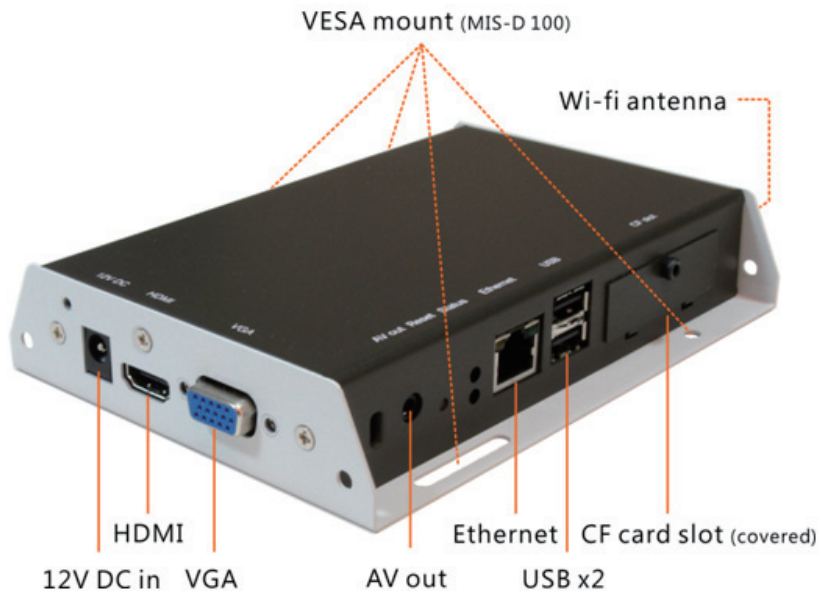
The player can be attached to mounting posts on the back of screens or inside cabinetry with the built in VESA MIS-D100 (100mmx100mm) compatible mounting flange

(For NMP-570w only) **ATTACH** the wireless antenna as shown. Screw antenna clockwise onto the post



Bottom view

1.4. Physical view



Physical features (left to right in above illustration)

- 12V DC for power adapter
- HDMI 1.3a connector for digital video and audio combined outputs, or digital video via option DVI adapter
- VGA port for analog video output
- 3.5mm composite AV output
- S/W Reset button to perform factory reset
- Ethernet port for network content update
- USB ports for USB content update and configuration
- CF card slot cover with integrated CF card removing tool

2. Configuring the NMP-570/NMP-570w Media Player

2.1. System connections

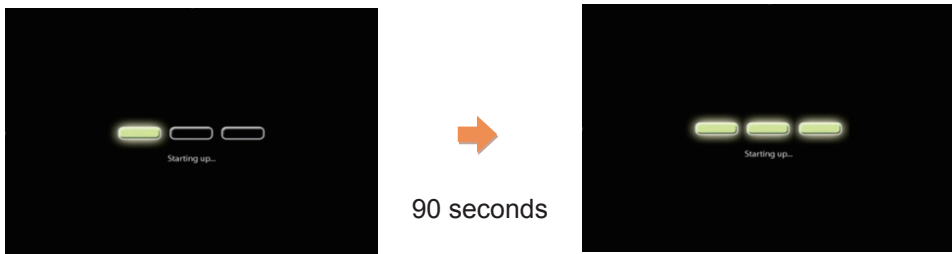
1. Attach a video cable (either VGA or HDMI) to your monitor.

When using the **VGA connection**, your monitor should support XGA (1024x768) resolution or greater. For audio output, you will also need to connect a stereo RCA cable from the NMP-570/NMP-570w to your monitor.

When using an **HDMI connection**, audio is sent along with video over the HDMI cable, so no additional cables are required.

Reminder: If you do not see anything on screen, check your monitor video input mode.

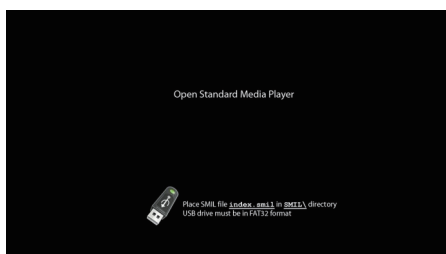
2. Attach the AC power adapter to power on the unit. Shortly afterwards, the following progress bar will be displayed on your monitor:



3. Player boot process takes approximately *90 seconds* to complete. The player will indicate that it is ready for content sync via the USB port or, if content has been loaded, begin playback immediately.

Troubleshooting Tips

1. The operation indicators light up, but no video is displayed on screen.
 - Ensure that your video cable (VGA or HDMI) is securely connected. When using an HDMI connection, choose high quality, certified HDMI cables or try using shorter length cables.
 - Check if your monitor is turned-on and switched to the corresponding video input source.
2. No sound is heard.
 - If using VGA connection, you also need to connect RCA audio cables.
 - Check volume (mute) settings on monitor.



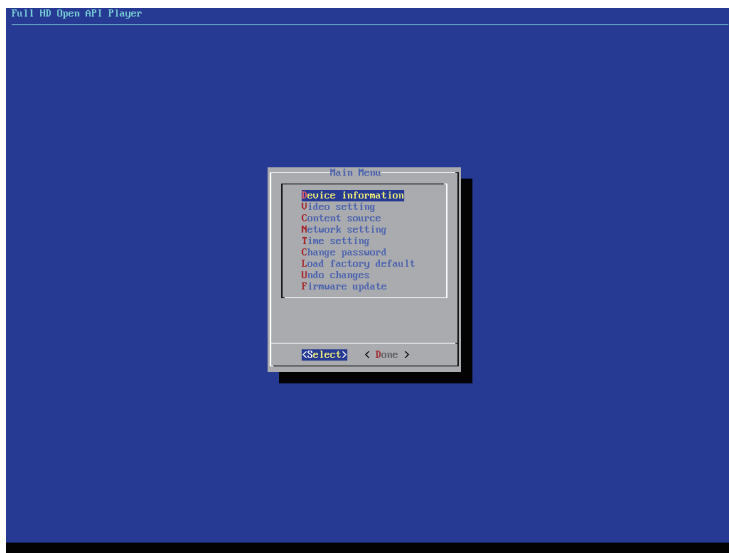
After performing the initial setup as outlined above, the player will boot into the "Open Standard Media Player" screen. Plug in a USB keyboard to enter configuration menus.

If you have already loaded media contents into the player, contents will

play back immediately after boot up, and the “Open Standard Media Player” screen will not be shown. You can still plug in a USB keyboard at any time during playback to enter the menu system.

2.2. USB keyboard configuration menus

You must attach a USB keyboard to the NMP-570 to configure settings. With the player booted up and ready, it takes approximately 30 seconds after you plug in the keyboard for the following menu to be displayed:



Navigating the menu

Navigate the menus using arrow keys, space bar, enter key, and numeral keys on your USB keyboard. Use the keyboard arrow keys to highlight menu items, press the space bar to move the star (cursor), and then press enter to confirm (<OK>) or reject (<Cancel>) any changes.

2.3. Connect the NMP-570/NMP-570w to your network

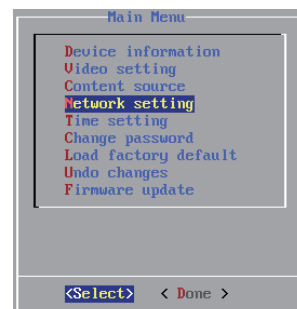
Enter Network setting in the menu to set up a network connection method.

Wireless connection (NMP-570W only)

The player will scan for wireless signals nearby during boot up. If the network requires authentication, you will be asked to provide the password for access.

Wired connection

To use the wired Ethernet connection, connect an Ethernet cable and the Wi-Fi (NMP-570W) will be disabled.



Player IP address

You will also need an IP address for the player on your network. This could be set automatically (DHCP) or manually (static IP):



DHCP – automatically assign network IP address

DHCP is enabled by default. You do not need to change the settings unless setting a static IP.

Static IP – manually assign network IP address

Highlight “IP configuration” and press “Enter” on keyboard to <Select>

Move the highlight to “Static IP” below, press “Space bar” on the keyboard to fill in the star (*) at the Static IP brackets, and press “Enter” on the keyboard to select <OK>.

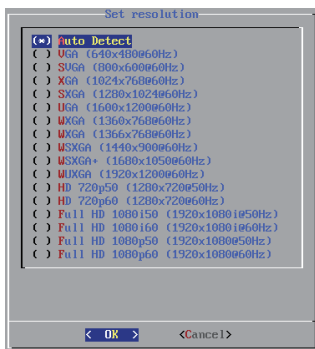
Proceed to configure an available static IP address. Select Wireless configuration or IP configuration as determined by your connection. Please consult your network administrator for assistance if necessary.

2.4. Video output settings

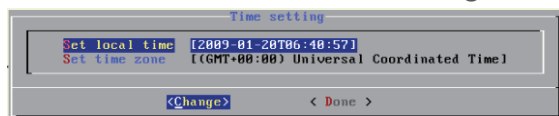
For best quality, set the output resolution to match your display’s native resolution to avoid image scaling and blur.

If you are connecting to an LCD TV, the resolution setting is most likely 1366x768, 1280x720, or 1920x1080. If you are connecting a LCD computer monitor, projector, or plasma display, refer to the device specifications for the best matching setting.

Press the space bar to fill in the star (*) before pressing the enter key for <OK>.



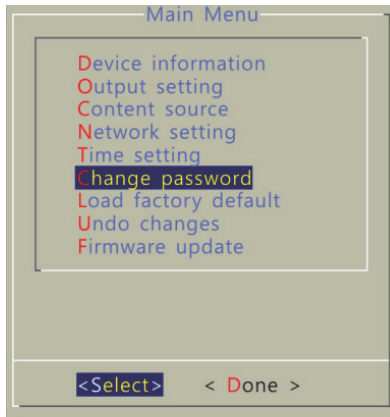
2.5. Clock and calendar settings



Set the correct time zone, time, and date. Daylight Saving (DST) rules can be configured in Set time zone.

2.6. Setting a password

To prevent unauthorized modification of player settings, set a player password to hide the menu.



From the top level menu, select “Change password” to set a password.

IMPORTANT: Once a password is set, you can only access the menus by connecting a USB keyboard and pressing CTRL + ALT + DELETE (3-key combination) simultaneously. You may connect the keyboard at any stage of player operation or before/ during boot-up.

If you forget the password, you will need to reset the device. See Factory reset.

2.7. Factory reset

If you forget a system password you have set, you must reset the system to regain access to the player.

Using the reset button

1. **PRESS** and **HOLD** the reset button with a pin
2. **RE-CONNECT** the power cord
3. **WAIT** about 8 seconds or until the status LED flashes
4. **RELEASE** reset button and wait for system to initialize



Using a USB keyboard

System reset will re-initialize the system, clear passwords, and return settings to their default values. Perform the following:

1. **CONNECT** USB keyboard
2. **REBOOT** the player and look for the reset instructions on the top left corner of the screen. When it appears, **PRESS** the Delete key on your keyboard
--> If you missed the reset window, unplug power and try again.
3. You should see a menu with a reset confirmation dialogue box. **SELECT** Yes to confirm
4. **WAIT** while system reboots to complete reset

2.8. Applying firmware upgrades

Firmware updates can be performed using a USB flash drive. Please read the release notes carefully regarding the changes that will be made to your player before applying the upgrade

1. **DOWNLOAD** the latest firmware and copy it to the root directory of a

- USB drive from www.digisignage.com
2. **PLUG** the power cord into the device
 3. **PLUG** a USB keyboard to the device to enter menu system
 4. Follow on screen instructions and **SELECT** firmware upgrade option in the menu
 5. When instructed, **PLUG IN** the USB drive to begin firmware upgrade

3. Content Management

The NMP-570/NMP-570w is designed to work with 3rd party management solutions. Please refer to the printed guide for related set up instructions.

4. Authoring in HTML5



A major advancement in the NMP-570/NMP-570w media appliance is the ability to playback HTML5 content which can contain dynamic information.

To find out more about using HTML5 for digital signage, visit <http://widget.iadea.com>.

5. Working with SMIL

The NMP-570/NMP-570w uses open communications protocols for content presentation and playback control. SMIL-compliance means predictable results across multiple devices, and SMIL's non-proprietary nature means that your investments are never obsolete.

5.1. Introduction

Using SMIL (pronounced "smile"), the language created by W3C for multimedia communications, the media player understands the language "spoken" by professional tools from companies such as Adobe, Apple, Microsoft, and Real Networks. What this means is quicker, easier, and better integration of your players into your digital signage networks, opening up avenues of software controls and realizing the full potential of your player hardware down the road.



Microsoft®

Adobe

5.2. www.a-smil.org for developers

The media player operating system utilizes W3C SMIL as the underlying scripting language, which lends well to customization to your project management needs. For resources, downloads, and community support, please visit www.a-smil.org.

6. Technical Data

6.1. Specifications

	NMP-570	NMP-570w
Video format support	POPAI Screen Media Standards S6 (MPEG-1 SIF, 3Mbps CBR) S7 (MPEG-1 480p, 10Mbps CBR) S8 (MPEG-1 720p, 15Mbps CBR) S9 (MPEG-2 480p, 6Mbps CBR) S10 (MPEG-2 720p, 12Mbps CBR) S11 (MPEG-4 AVC, 480p, 6Mbps CBR) S12 (MPEG-4 AVC, 720p, 10Mbps CBR) E4 (VC-1/WMV9, MP@ML, 720p) E5 (VC-1/WMV9, MP@HL, 1080p) E6 (MPEG-2, 1080p, 20Mbps CBR) E7 (MPEG-4 ASP, 480p, 10Mbps CBR) E8 (MPEG-4 AVC, 1080p, 25Mbps CBR)	
Image format support	POPAI Screen Media Standards S1 (JPEG 480p baseline) S2 (JPEG 720p baseline) S3 (JPEG 1080p baseline) E1 (PNG 24bpp+alpha, 480p) E2 (PNG 24bpp+alpha, 720p) E3 (PNG 24bpp+alpha, 1080p)	
Audio codec support	POPAI Screen Media Standards S4 (MPEG L2 audio) S5 (MP3 audio, 384Kbps)	
Dynamic content	W3C HTML5 (HTML, CSS, JavaScript) W3C SMIL 3.0 instructions (sub-set)	

Physical I/O connectors	HDMI 1.3 VGA 3.5mm AV out RJ45 Ethernet USB 2.0	As NMP-570 plus: Wi-Fi antenna port
Local storage	4GB on-board flash memory (up to 1.8 hrs of 5 Mbps high def. video) CF card expansion slot	
Accessories	3.5mm-RCA AV cable Ethernet cable	As NMP-570 plus: Wi-Fi antenna
Power requirement	12V 1.5A DC	
Power consumption*	8 watts max (when playing 1080P full resolution video)	
Environmental	Operating temperature: 0 – 40° C / 32 – 104° F Humidity: 5 – 85% @ 40° C / 32 – 104° F non-condensing	
Dimensions	211x153x 43mm (8.3 X 6 X 1.7 inches)	
Weight	1.14kg 2.5lbs	1.4kg 3 lbs
Safety	UL-approved AC adapters	
Certifications	CE/FCC/RoHS, FCC-ID	
Warranty	One-year limited parts & labor	

7. Appendix: FAQ

What video format can I play?

Video files encoded in MPEG-4 ASP up to 720x400 resolutions and 2Mbps bitrates should play perfectly. If a certain video is not played as scheduled, or if it plays poorly, please search the support site for “transcode” instructions.

The signboard is placed near my Wi-Fi access point, yet the connection is unreliable.

Wi-Fi appliances in general should be placed 10 feet (3 meters) from the Wi-Fi access point for reliable operation. Try relocating the access point further away from the signboards to improve connection.

What can I do about the gap between video and video?

Video gaps (blank screen) occur before and after each video is played. To minimize the gap, avoid back to back video programming by scheduling an image between each video.

If both Ethernet & WiFi are connected, which one will take precedence?

When Ethernet is not available or disconnected, system will try to use WiFi connection. If both connections are available, Ethernet will be used.

What is the maximum file size for a single video file?

The maximum video file size for the NMP-570/NMP-570w is 2GB. We recommend reserving a safety margin to avoid exceeding the limit (i.e. limiting files to 1850MB).

What should I do if I forgot my password?

In this case, please perform a factory reset.

Use the S/W RESET button located at the back of the media player to restore factory settings. This will also clear the player’s password.

Performing a factory reset

Warning: This procedure will restore all menu settings to factory default and format the internal storage to factory conditions (all contents will be removed).

To restore factory settings and format the drive:

1. Disconnect power cable from the player unit
2. Press and hold the S/W RESET button
3. Connect the power cable while holding the S/W RESET button until status light flashes (about 15 seconds)
4. Please wait while the system drive is being formatted

How do I restore the device back to factory defaults?

The S/W RESET button located at the back of the media player can be used to restore factory settings.

To restore factory settings:

1. Disconnect power cable from the player unit
2. Press and hold the S/W RESET button
3. Connect the power cable while holding the S/W RESET button until status light flashes (approx. 15 seconds)

How do I manage the playback of contents?

The media appliance is designed to be interoperable with leading 3rd party management software solutions or via SMIL open standard commands.

Could the player display Flash or Microsoft PowerPoint presentations?

The player features limited PowerPoint support, but not Flash support.

While PCs can play many formats with varying degrees of success, RISC-based media players are designed to reliably play specific video formats (Please see spec for details). While Microsoft PowerPoint native files could not play directly on a RISC-based player, the file is converted through other software (i.e. Adfotain Manager Express) into an image format to be played as an image slideshow.

How do I manage the playback of contents?

The media appliance is designed to be interoperable with leading 3rd party management software solutions or via SMIL open standard commands.

Why won't some media files play properly?

The video data bit-rate used may have exceeded the recommended bit rate.

The video data bit-rate is the amount of video or audio data used per second to store or play the contents, usually expressed in Mbps (mega-bits per second). Video encoded with excessive bit-rates will not playback smoothly in the media player, likely due to storage i/o bottleneck.

Visit www.digisignage.com for compatible media format presets.

The media playback looks different on a PC compared to the media player's screen. (Wrong aspect ratio)

There are 2 major aspect ratios (width-to-height ratios) for video content, but many kinds of displays. If you play 4:3 video on a 16:9 display (or vice versa), a circle becomes oval, and the picture takes on a squeezed or stretched look. To avoid this distorted look, adding black bars are a common technique.

The Network Media Player can be configured to automatically add black bars for certain types of displays. You can set the output resolution in NMP-570's configuration menu to match the native resolution of your display.

Some JPEG images cannot be played in the media player.

Progressive JPEG are not supported. Please convert to baseline JPEG for maximum compatibility.

JPEG images can be either of 2 types: baseline or progressive compression. Baseline JPEG offers greatest compatibility, while progressive JPEGs are suitable for web site images. Progressive images are downloaded and

displayed “progressively,” being rendered more clearly as more data is received over the internet. Progressive images are primarily supported on PCs. For media appliances, make sure to save images as baseline JPEG in your photo editor, or resave them as baseline JPEGs using free tools such as IrfanView (<http://www.irfanview.com/>).

Does the media player support video streaming?

No. ViewSonic media players play files from local storage and do not support real-time video streaming over the network. This delivers an optimum viewing experience free of playback quality issues such as stuttering, blocking, or blue-screens.

However, XMP series players support dynamic content delivery to push individual files quickly over the network using the SOAP API. This method is a compromise between live streaming with its high bandwidth demands and entire playlist content updates which necessitate longer update cycles.

The media player is not playing. What should I do?

Check the player’s messages on the display (OSD, or on screen display) for status information.

Play list errors and scheduling issues are two major causes of playback problems. To determine if the problem is caused by a bad play list, just delete the play list and restart player. The player should loop through all media files, indicating a fault with the play list.

If the playback is scheduled to play at specific time, check to see if the device is set to the right time zone on the world clock. When nothing seems wrong, the time zone setting is often the reason the program is not played.

Customer Support

For technical support or product service, see the table below or contact your reseller.

Note: You will need the product serial number.

Country/Region	Web Site	T=Telephone F=Fax	E-mail
Australia/New Zealand	www.viewsonic.com.au	AUS=1800 880 818 NZ=0800 008 822	service@au.viewsonic.com
Canada	www.viewsonic.com	T (Toll-Free)= 1-866-463-4775 T (Toll)= 1-424-233-2533 F= 1-909-468-3757	service.ca@viewsonic.com
Europe	www.viewsoniceurope.com	www.viewsoniceurope.com/uk/support/call-desk	
Hong Kong	www.hk.viewsonic.com	T= 852 3102 2900	service@hk.viewsonic.com
India	www.in.viewsonic.com	T= 1800 266 0101	service@in.viewsonic.com
Ireland (Eire)	www.viewsoniceurope.com/uk/	www.viewsoniceurope.com/uk/support/call-desk/	service_ie@viewsoniceurope.com
Korea	www.kr.viewsonic.com	T= 080 333 2131	service@kr.viewsonic.com
Latin America (Argentina)	www.viewsonic.com/la/	T= 0800-4441185	soporte@viewsonic.com
Latin America (Chile)	www.viewsonic.com/la/	T=1230-020-7975	soporte@viewsonic.com
Latin America (Columbia)	www.viewsonic.com/la/	T= 01800-9-157235	soporte@viewsonic.com
Latin America (Mexico)	www.viewsonic.com/la/	T= 001-8882328722	soporte@viewsonic.com
Renta y Datos, 29 SUR 721, COL. LA PAZ, 72160 PUEBLA, PUE. Tel: 01.222.891.55.77 CON 10 LINEAS Electroser, Av Reforma No. 403Gx39 y 41, 97000 Merida, Yucatan. Tel: 01.999.925.19.16 Other places please refer to http://www.viewsonic.com/la/soporte/index.htm#Mexico			
Latin America (Peru)	www.viewsonic.com/la/	T= 0800-54565	soporte@viewsonic.com
Macau	www.hk.viewsonic.com	T= 853 2870 0303	service@hk.viewsonic.com
Middle East	ap.viewsonic.com/me/	Contact your reseller	service@ap.viewsonic.com
Puerto Rico and Virgin Islands	www.viewsonic.com	T= 1-800-688-6688 (English) T= 1-866-379-1304 (Spanish) F= 1-909-468-3757	service.us@viewsonic.com soporte@viewsonic.com
Singapore/ Malaysia/ Thailand	www.viewsonic.com.sg	T= 65 6461 6044	service@sg.viewsonic.com
South Africa	ap.viewsonic.com/za/	Contact your reseller	service@ap.viewsonic.com
United Kingdom	www.viewsoniceurope.com/uk/	www.viewsoniceurope.com/uk/support/call-desk/	service_gb@viewsoniceurope.com
United States	www.viewsonic.com	T (Toll-Free)= 1-800-688-6688 T (Toll)= 1-424-233-2530 F= 1-909-468-3757	service.us@viewsonic.com

Limited Warranty

VIEWSONIC Network Media Player

What the warranty covers:

ViewSonic warrants its products to be free from defects in material and workmanship, under normal use, during the warranty period. If a product proves to be defective in material or workmanship during the warranty period, ViewSonic will, at its sole option, repair or replace the product with a like product. Replacement product or parts may include remanufactured or refurbished parts or components.

How long the warranty is effective:

ViewSonic Network Media Player are warranted for 1 year for labor from the date of the first customer purchase.

Who the warranty protects:

This warranty is valid only for the first consumer purchaser.

What the warranty does not cover:

1. Any product on which the serial number has been defaced, modified or removed.
2. Damage, deterioration or malfunction resulting from:
 - a. Accident, misuse, neglect, fire, water, lightning, or other acts of nature, unauthorized product modification, or failure to follow instructions supplied with the product.
 - b. Repair or attempted repair by anyone not authorized by ViewSonic.
 - c. Causes external to the product, such as electric power fluctuations or failure.
 - d. Use of supplies or parts not meeting ViewSonic's specifications.
 - e. Normal wear and tear.
 - f. Any other cause which does not relate to a product defect.
3. Any product exhibiting a condition commonly known as "image burn-in" which results when a static image is displayed on the product for an extended period of time.

How to get service:

1. For information about receiving service under warranty, contact ViewSonic Customer Support (please refer to Customer Support page). You will need to provide your product's serial number.
2. To obtain warranted service, you will be required to provide (a) the original dated sales slip, (b) your name, (c) your address, (d) a description of the problem, and (e) the serial number of the product.
3. Take or ship the product freight prepaid in the original container to an authorized ViewSonic service center or ViewSonic.
4. For additional information or the name of the nearest ViewSonic service center, contact ViewSonic.

Limitation of implied warranties:

There are no warranties, express or implied, which extend beyond the description contained herein including the implied warranty of merchantability and fitness for a particular purpose.

Exclusion of damages:

ViewSonic's liability is limited to the cost of repair or replacement of the product. ViewSonic shall not be liable for:

1. Damage to other property caused by any defects in the product, damages based upon inconvenience, loss of use of the product, loss of time, loss of profits, loss of business opportunity, loss of goodwill, interference with business relationships, or other commercial loss, even if advised of the possibility of such damages.
2. Any other damages, whether incidental, consequential or otherwise.
3. Any claim against the customer by any other party.



ViewSonic®